



To: **Representatives** of the Capitol Region Purchasing Council

Subject: **Daily Heating Fuel and Gasoline Prices**

Date: December 6, 2010

Attached are tables listing the daily heating fuel and gasoline prices for the period of October 1, 2009 to November 30, 2010. Both gasoline and heating oil figures are compiled from the Oil Price Information Service. Please note that the Gross Receipts Tax has been discontinued for diesel fuels as of July 1, 2007. In addition, the Gross Receipts Tax rate has increased from 6.3% to 7%. Please make sure to carefully check your invoices.

Heating Fuel: The table lists the New Haven **Average** price for the heating fuel. Number 2 heating fuel and diesel fuel are not subject to the State of Connecticut Gross Receipts Tax.

No 2
Diesel

Total Cost = 's New Haven Low Price + Differential
Total Cost = 's New Haven Low Price + Differential

Gasoline: The table lists the New Haven Rack **Average** (daily closing price) for regular, mid-grade and premium gasoline. The base price for the 2006 contract is arrived at by taking the average price and adding the differential and the State of Connecticut Gross Receipts Tax.

Total Cost = 's New Haven Rack Average Price
+ Differential
+CT Gross Receipts Tax

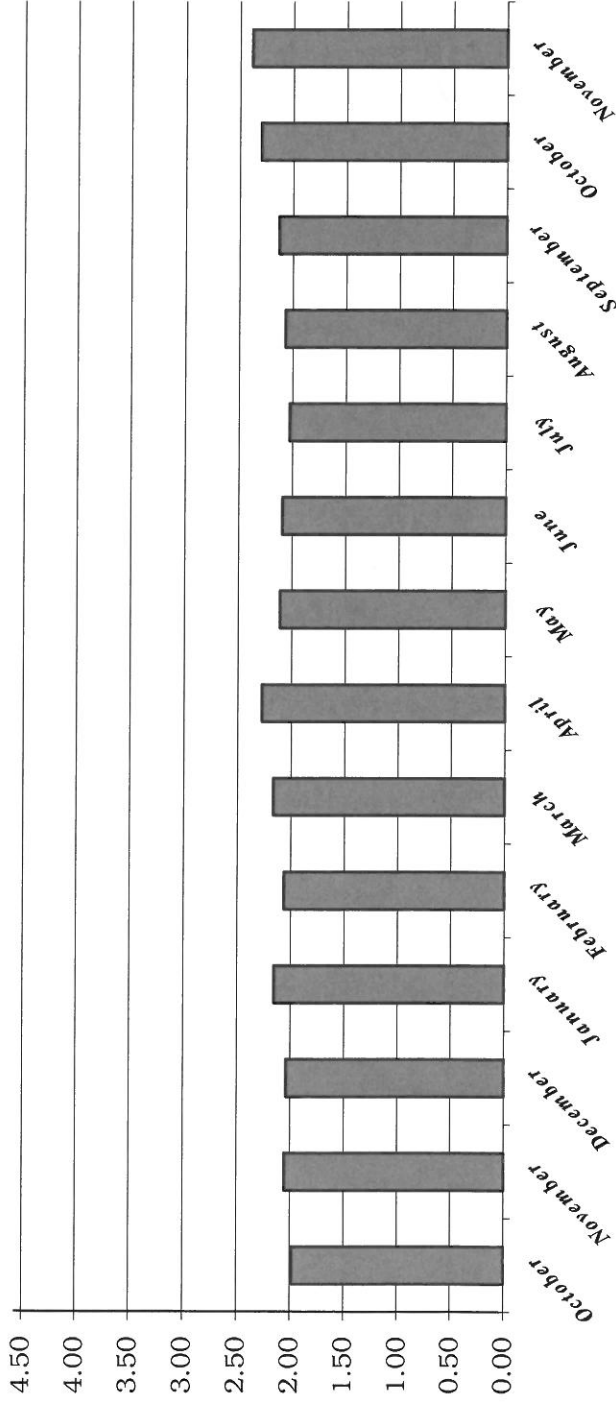
*Please refer to the bar chart on the back of this memo depicting the monthly averages for the last fourteen months of Fluctuating Number 2 Heating Fuel Oil Prices. If you refer to the tables listing the daily fuel oil prices, you will be able to compare heating fuel and diesel prices. Please feel free to call with any questions you might have.

Enclosures

Maureen Barton
Program Assistant
860-522-2217, ext. 237

Fluctuating Fuel Oil Prices*
October 2009
November 2010

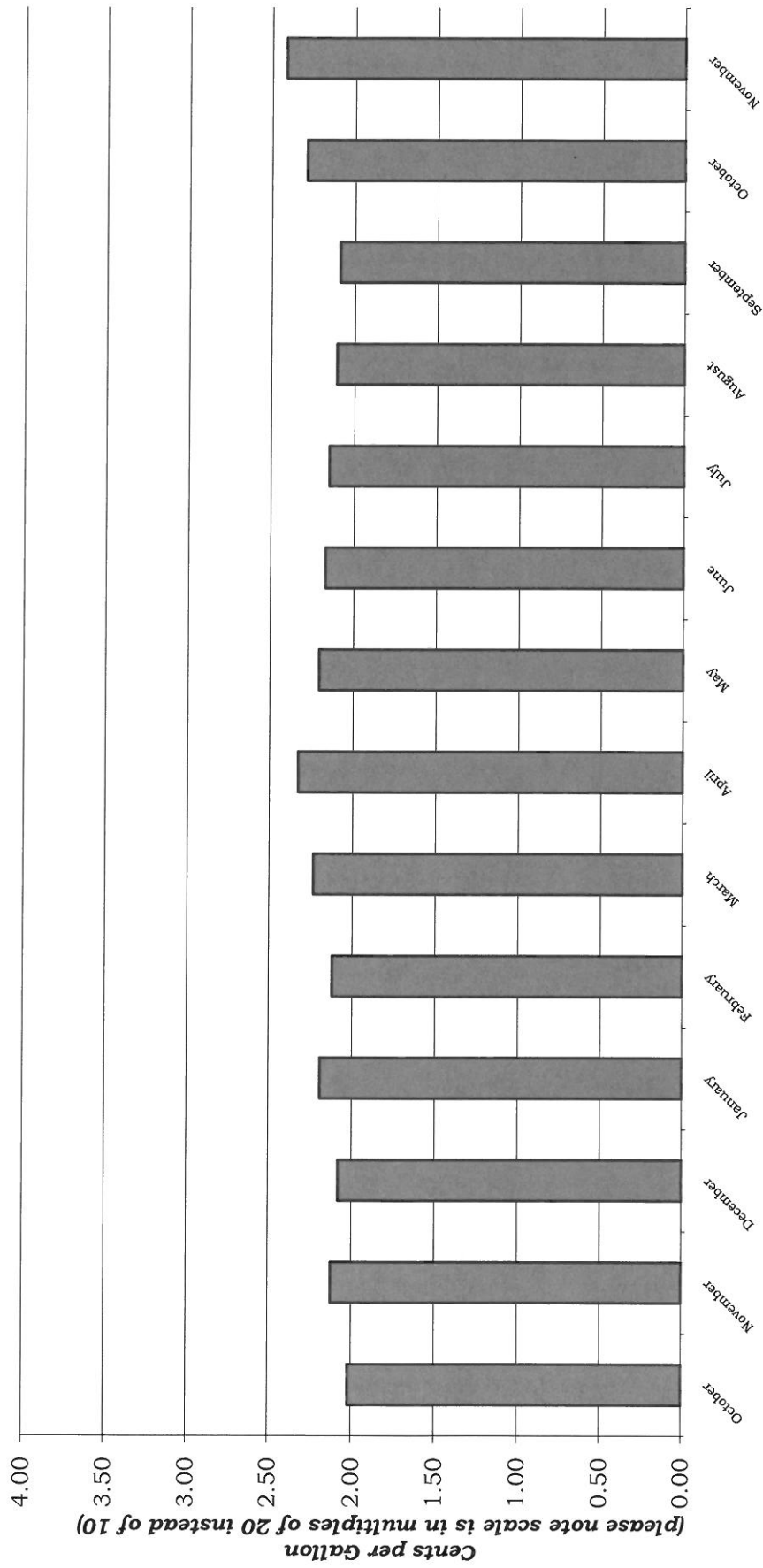
Cents Per Gallon
 (please note scale is in multiples of 20 instead of 10)



*No. 2 Heating Fuel Oil - New Haven
 Average Source: OPIS

Monthly Averages
 Prepared By
 Capitol Region Council of Governments

Gasoline Prices*
October 2009
November 2010



Monthly Average

Rack Average Gasoline Prices beginning Jan. 2006 (Source: OPIS)

Prepared by
 Capitol Region Council of Governments

Gasoline - OPIS Rack Average					Heating Fuel - OPIS Rack Average				
Effective Date	Regular (Average)	Mid-Grade (Average)	Premium 93 (Average)	No. 2	Regular Diesel	Premium Diesel	ULSD		
11/1/2010	2.2388	2.3009	2.4232	2,2987		2,3604	2,3370		
11/2/2010	2.2474	2.3099	2.4324	2,3126		2,3785	2,3659		
11/3/2010	2.2576	2.3205	2.4428	2,3372		2,3886	2,3998		
11/4/2010	2.2829	2.3459	2.4689	2,3800		2,4452	2,4277		
11/5/2010	2.3088	2.3715	2.4938	2,4126		2,4816	2,4693		
11/8/2010	2.3161	2.3784	2.5015	2,4259		2,4947	2,4827		
11/9/2010	2.3161	2.3786	2.5031	2,4426		2,5106	2,4974		
11/10/2010	2.3428	2.4052	2.5292	2,4725		2,5384	2,5177		
11/11/2010	2.3818	2.4442	2.5680	2,4916		2,5595	2,5469		
11/12/2010	2.3987	2.4608	2.5838	2,4753		2,5402	2,5272		
11/15/2010	2.4221	2.4843	2.6081	2,4172		2,4826	2,4729		
11/16/2010	2.4047	2.4677	2.5931	2,4209		2,4870	2,4734		
11/17/2010	2.3689	2.4314	2.5569	2,3619		2,4310	2,4213		
11/18/2010	2.3913	2.4509	2.5704	2,3263		2,3935	2,3760		
11/19/2010	2.4278	2.4906	2.6153	2,3496		2,4179	2,4087		
11/22/2010	2.3953	2.4583	2.5824	2,3293		2,4010	2,3919		
11/23/2010	2.3474	2.4115	2.5377	2,3233		2,4015	2,3888		
11/24/2010	2.3311	2.3956	2.5206	2,3487		2,4165	2,3988		
11/25/2010	2.3669	2.4307	2.5561	2,3784		2,4658	2,4546		
11/26/2010	2.3669	2.4307	2.5561	2,3784		2,4658	2,4546		
11/29/2010	2.3753	2.4391	2.5645	2,3931		2,4758	2,4594		
11/30/2010	2.4135	2.4774	2.6057	2,4178		2,5008	2,4868		