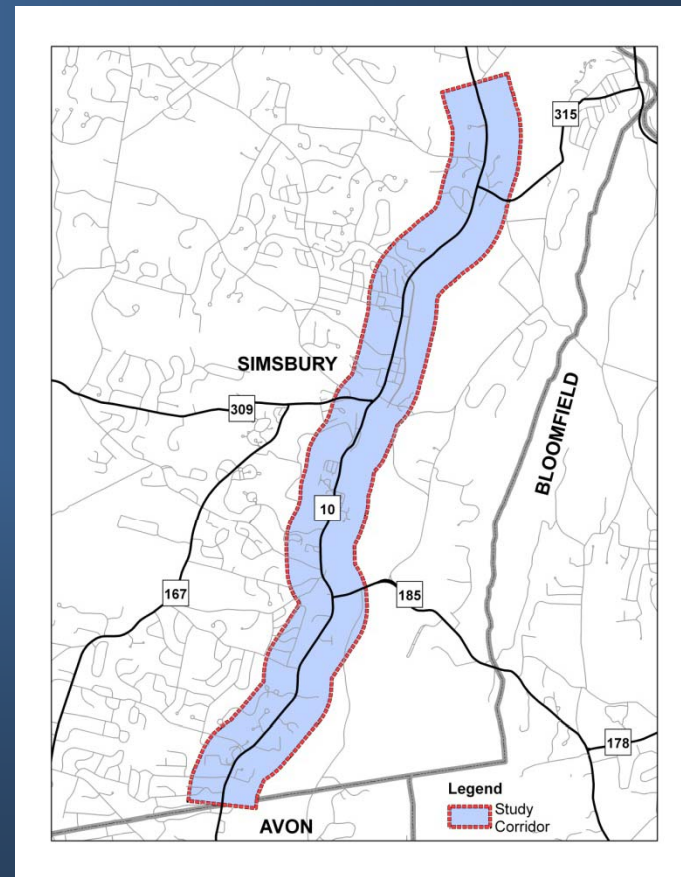


# Route 10 Corridor Study



# Schedule

- Completed quality-based consultant selection process
- Completed scope and fee negotiations and final contracts
- Anticipating study completion summer 2011 with final plan of recommendations



# What is a corridor study?

Multi-Modal planning process to prepare a master plan for a transportation corridor

# Why prepare a corridor master plan?

- Promote orderly growth and efficient use of public infrastructure
- Assure there is adequate infrastructure to accommodate growth
- Provide guidelines for roadway improvements



# Evolution of Corridor Studies

## Traditionally

- Facilities Plan - identified needed transportation improvements to assure current & future traffic can be handled efficiently and safely.

## New Direction

- Context Sensitive plan
- Facilities need to fit into communities they pass through



# Route 10 Corridor Study

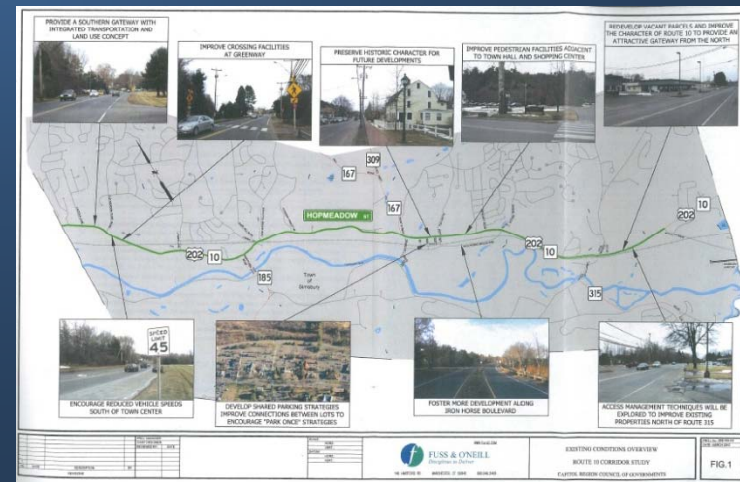
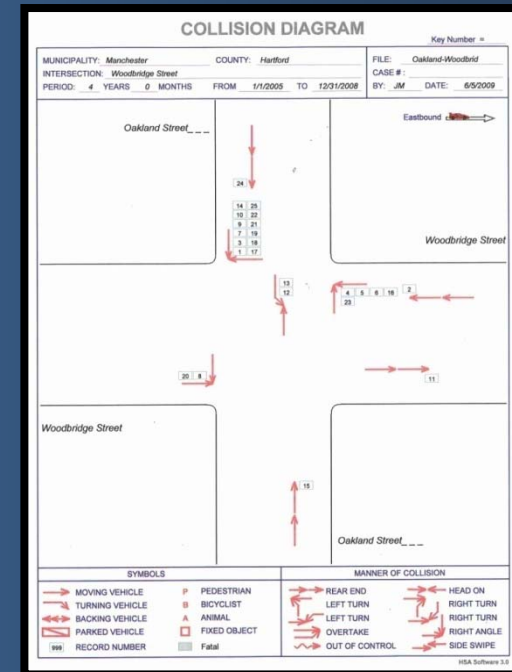
- More proactive by seeking ways to preserve and enhance community character - *included landscape architect on team and have more urban design elements in scope*
- Build upon the community vision established by the Town Center Charrette



# Scope of Work

## 1. Analyze existing conditions

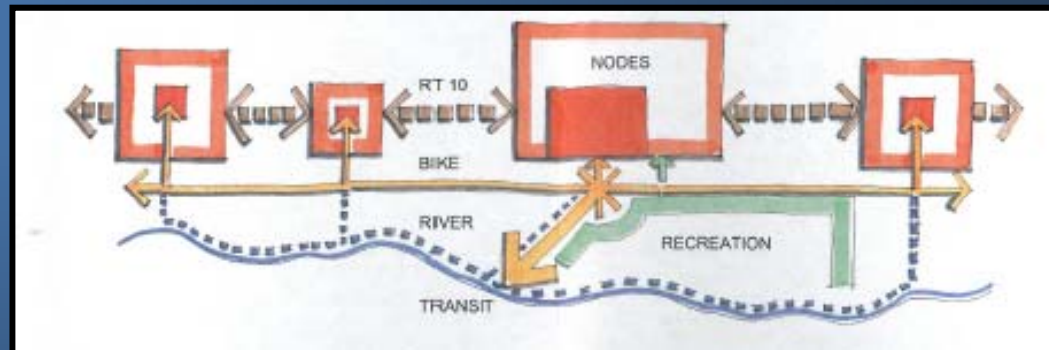
- Traffic & Roadway
- Pedestrians, Bicyclists and Transit
- Land Use & Community Resources
- Environmental Resources & Constraints



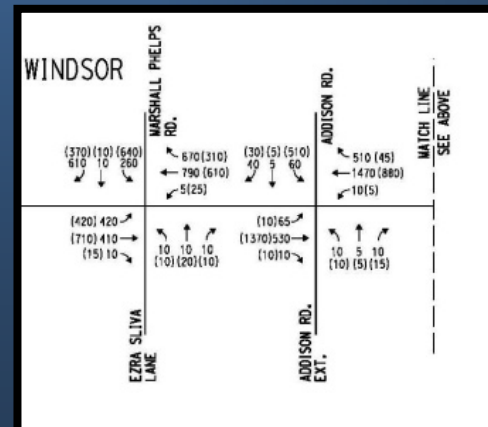
# Scope of Work

## 2. Preliminary Planning & Brainstorming

Opportunities & Issues



What will happen in 2030?



# Scope of Work

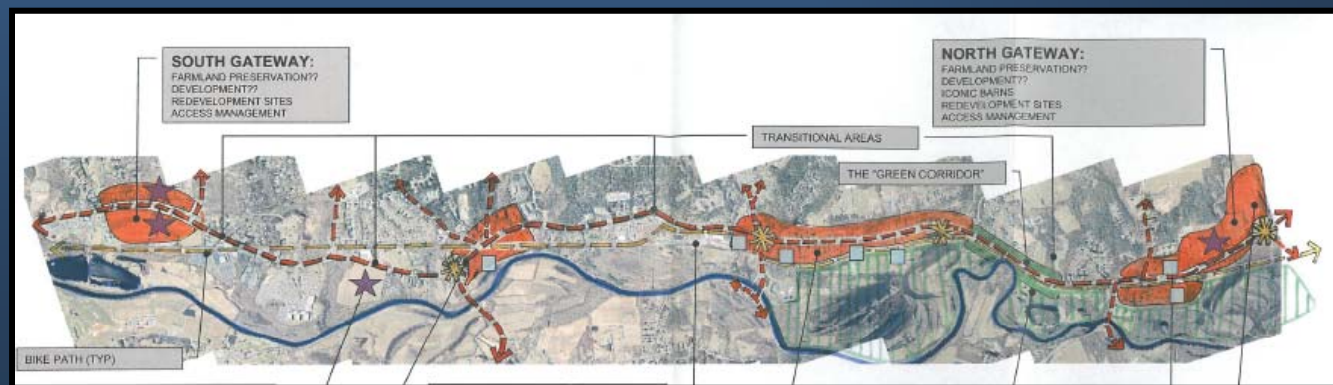
## 3. Charrette



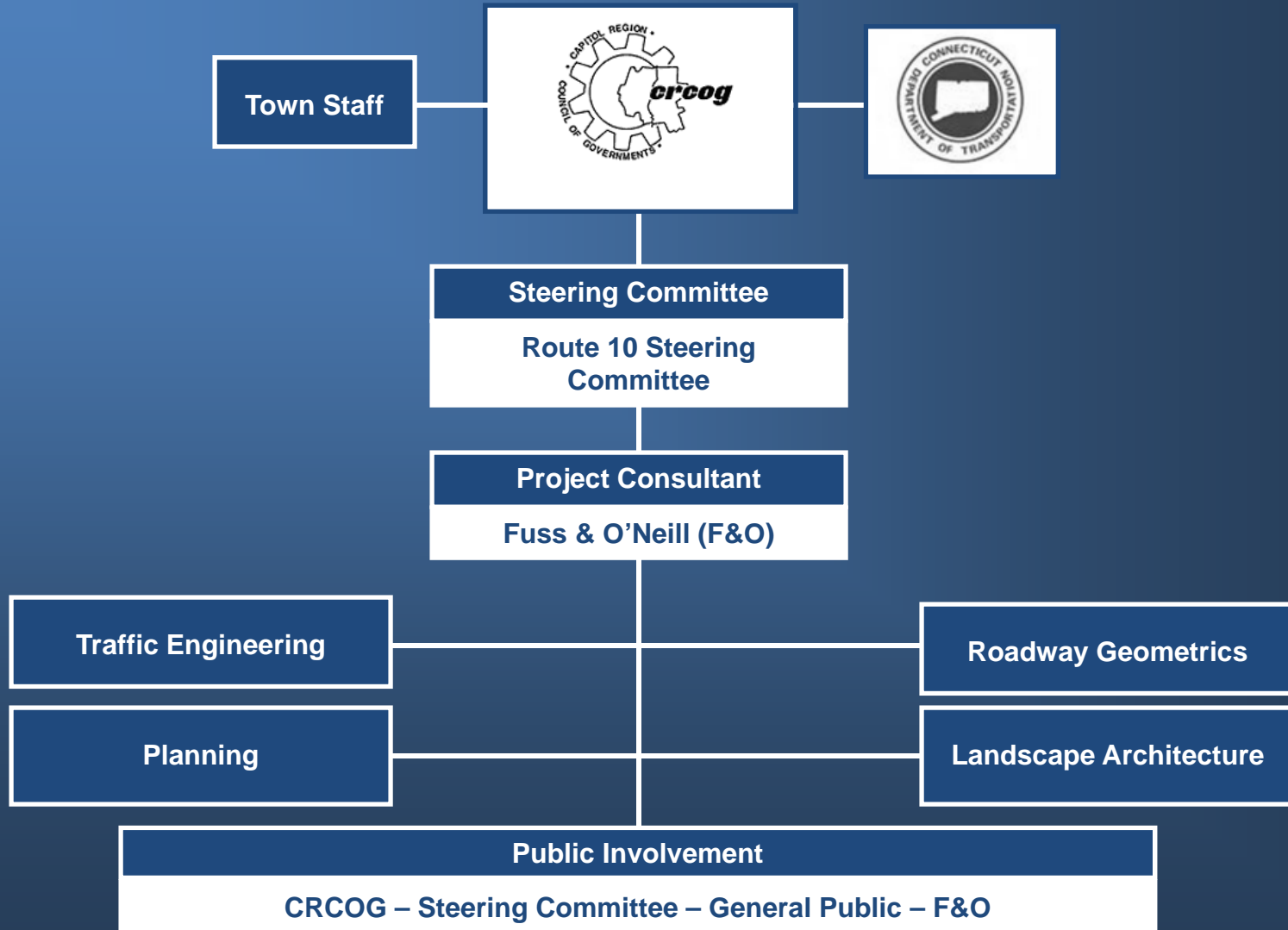
# Scope of Work

## 4. Develop Final Plan / Recommendations

- Input from Steering Committee, stakeholders, ConnDOT & public
- Endorsement from Board of Selectmen
- Groundwork to compete for funding



# Study Team



# Community Involvement

- Steering Committee
- Public Informational Meetings/Charrette
- Stakeholder Meetings
- Coordination with town staff
- Briefings to Board of Selectmen
- Web Notifications & Postings
- Articles in town newspapers/newsletters
- Public Access Channel



The screenshot shows the website for the Capitol Region Council of Governments (CRCOG). The page is titled "Route 10 Corridor Study" under the "CURRENT STUDIES" section. The "Project Overview" text states: "The Capitol Region Council of Governments (CRCOG), the Connecticut Department of Transportation (ConnDOT) and the Town of Simsbury are initiating a study to address safety, access management and development potential / growth along the Route 10 corridor in the town of Simsbury. We will be working with town officials and the public over a 10 month period to identify constraints and opportunities throughout the 7-mile study corridor running between the Simsbury/Avon border and Wolcott Road." A photograph of a road with a car and a utility pole is included. Contact information for Emily Moos, Senior Planner and Policy Analyst, is provided at the bottom: "Please feel free to contact Emily Moos, Senior Planner and Policy Analyst, (emoos@crcog.org) or 860.522.2217 x219. We will continue to update this site with our findings and meeting".



# Steering Committee Roles/ Responsibilities



- Participate in Regular meetings
  - Review distributed material prior to meetings and participate in discussions
  - Comment on material presented based on the organizations you represent
  - In the event that you are unable to attend, send an alternate
- Attendance at Public Meetings & Charrette
- Guide consulting team as it works with local issues and concerns
- Operates on committee consensus; if full committee cannot reach decisions, majority and minority opinions will be documented in meeting minutes



# Project Website

[www.crcog.org](http://www.crcog.org)

## CRCOG Contact Information

Emily Moos, AICP

Project Manager

Email: [emoos@crcog.org](mailto:emoos@crcog.org)

Phone: (860) 522-2217 x 219

Jennifer Carrier, P.E.

Director of Transportation Planning

Email: [jcarrier@crcog.org](mailto:jcarrier@crcog.org)

Phone: (860) 522-2217 x 212

