

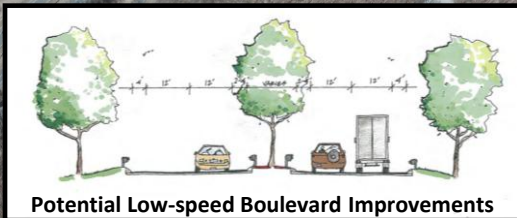
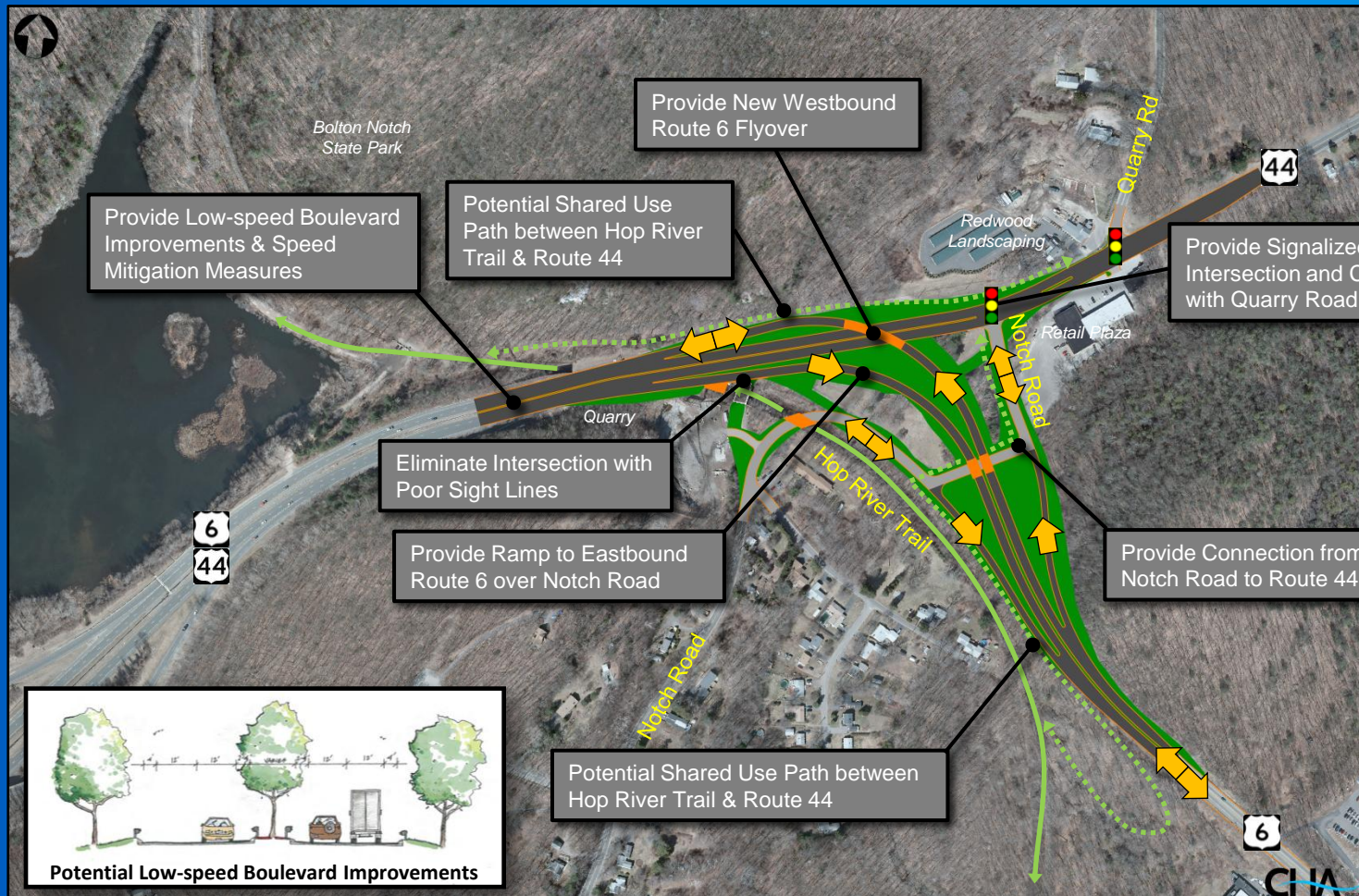
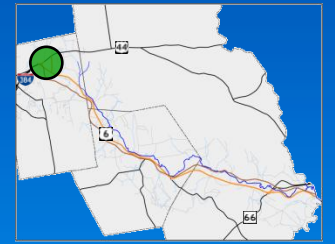
Bolton Notch Focus Area

“Notch Road Connector with Route 6 Flyover”

The improvement concept for Bolton Notch modifies the layout of the existing Route 6 and Route 44 junction to improve access between Bolton Center and Routes 6 and 44 via Notch Road, and to accommodate full directional access between Route 6 and Route 44. This concept also provides opportunities to improve bicycle and pedestrian connectivity via shared use paths that would connect Route 44, Route 6, Notch Road, and the Hop River Trail at this location.

Key issues addressed by this concept include:

- Safety and operational issues at the existing unsignalized intersection of Notch Road with Route 6/44 including inadequate sight distance and long delays.
- Lack of a connection between westbound Route 6 and eastbound Route 44, and between westbound Route 44 and eastbound Route 6.
- Lack of bicycle and pedestrian access within the existing junction.
- High eastbound travel speeds entering the junction.
- Stakeholder concerns about the safety and convenience of emergency vehicle and school bus access to and from Bolton Center via Notch Road.



REVISED: JANUARY 9, 2012

