

**CAPITOL REGION  
TRANSPORTATION PLAN**

*A guide for transportation investments  
through the year 2040*

**DRAFT**

Capitol Region Council of Governments

Adopted by CRCOG Policy Board on \_\_\_\_\_



***2011 Capitol  
Region  
Transportation  
Plan***

***A guide for  
transportation  
investments  
through the year 2040***

# *2011 Updates to Transportation Plan*

**2007** - Plan defined policy direction in agreement with SAFETEA-LU; input from other agencies; completed studies

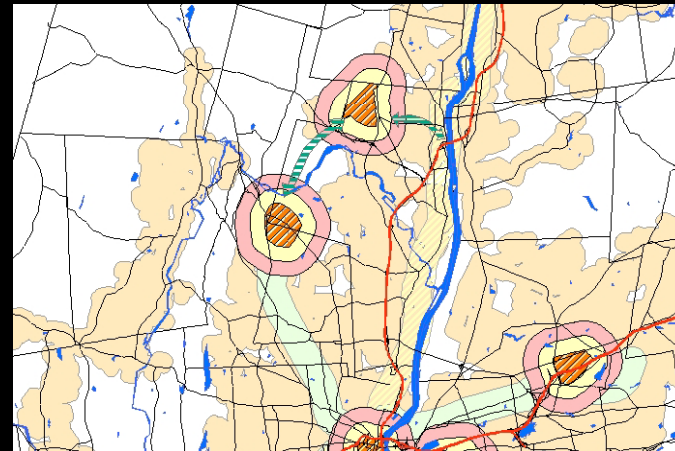
**2011** - Plan reaffirmed 2007 policies - no major changes in core policies

- Includes recommendations from recent studies
- Sustainable Transportation System
- Inclusion of Green Infrastructure
- 'Unfunded' Needs

## *Recently Endorsed Plans*

- **Capitol Region Transportation Plan** April 2007
- **Rt 175/Rt 9 Area Traffic Study** December 2007
- **Transportation Monitoring & Management Report  
Metropolitan Hartford Area: 2005** December 2007
- **Regional Pedestrian Bicycle Plan, Active Transportation  
Initiative** April 2008
- **Locally Coordinated Human Services Transportation Plan** June 2007/April 2009
- **Route 305 Corridor Study** October 2009
- **Regional Plan of Conservation and Development** October 2009
- **Route 195 Corridor Study** April 2010
- **Northwest Corridor Transit Plan** April 2010
- **I-84 Viaduct Study** December 2010

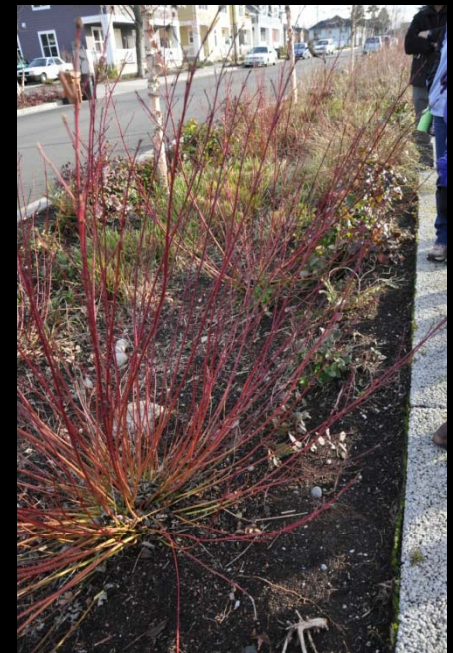
# 1. A Sustainable Transportation System



# *Transportation Sustainability: changes*

Continued commitment to livable communities goals

1. **Link Land Use and Transportation Planning** – Strengthen and link land use analysis with Transportation Planning in transportation studies
2. **Transit Oriented Development**
3. **Complete Street Principles** – Design roads for transit, bikes, peds, & cars
4. **Green Streets** - Support green infrastructure initiatives



# 2. Transit System

*New Haven - Hartford - Springfield  
Passenger Rail*



*Airport*

*Griffin  
Busway*

*Manchester  
Busway*

*Downtown  
Circulator*

*New Britain  
Busway*

*Rocky Hill  
Busway*



# *Transit System (continued)*

Other items:

- Jobs Access
- Locally Coordinated Human Services Transportation Plan
- Bus Shelter / Stop Policy
- ITS implementation



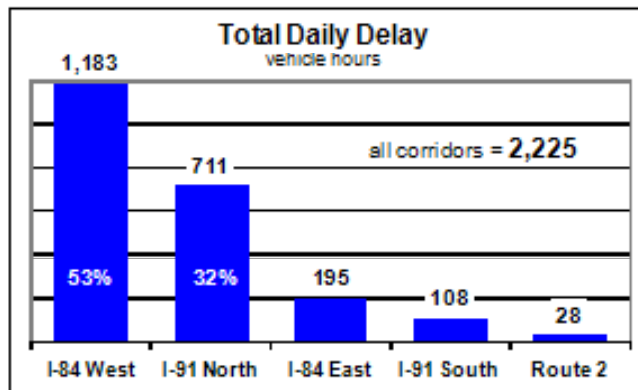
# 3. Highway System

## System Management

- Congestion Management Process
- ITS

## Safety Management

## Incident Management



# Highway - Infrastructure

## Freeway - Reconstruction

- Interstate 84 Viaduct
- Putnam Bridge



## Freeway - Operational Improvements

- Interstate 84 – West Hartford, Farmington, Manchester
- Rentschler Development Area, I91 at Day Hill Road, Buckland Area (placeholder)

## Arterial Improvements

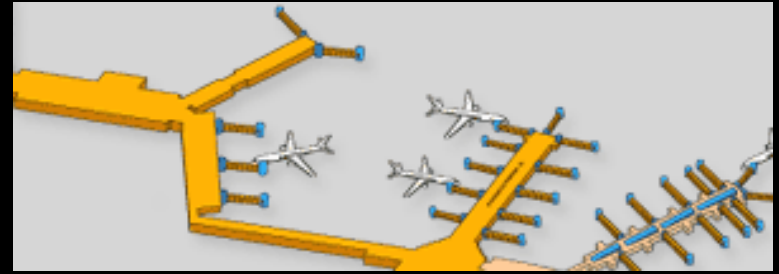
- Route 4, 10, 15, 44, 175, 190, 195, 305, Bradley Area, Rentschler Field

# 4. Bicycles & Pedestrians

- 2008 Regional Bike/Ped Plan (Active Transportation)
- Improve facilities for walking & biking
  - Regional trail projects
  - Secondary trails
- Improve safety
  - Training workshops for towns
  - Safe routes to schools program
- Bike & ped friendly culture



# 5. Bradley Airport



- ***Economic development***
  - Critical engine for economic growth  
(2007 Economic Impact Survey - \$4 Billion per year)
  
- ***Ground access***
  - Road access: corridor study recommendations (BATS)
    - Route 75 access & gateway improvements
    - Access to west side cargo facilities
  - Transit access: New Haven – Springfield Rail
    - Bus shuttle from Windsor Locks rail station to terminal
  - Transit access: Bus Service

# 6. Freight Transport System

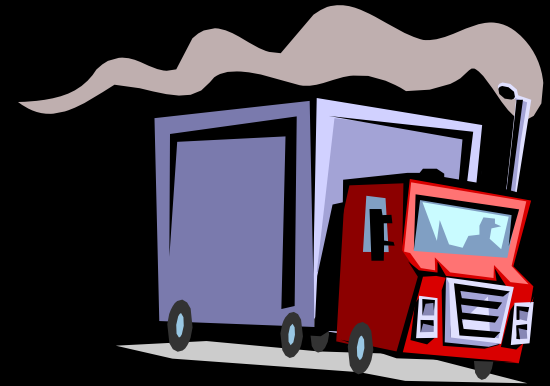
## *General Recommendations*

- Continue freight planning program
- Transit Village
- Continued emphasis on interregional coordination efforts
  - Problems are multi-state
  - Solutions beyond scope of single region



# 7. Special Policies

- *Transportation Security*
- *MPO Coordination*
- *Air Quality – Transportation Policy*
- *Demand Management Policy*



## 8. Financial Plan

- **Capital Costs = \$2.148B**
- **Total Revenues = \$2.167B**
- **Reserve Amount = \$18.8 million**
- **Unfunded Needs = \$2.248B**

**(Interstate 84 Viaduct – largest unfunded piece)**

## 9. Environmental Justice

*Assure that CRCOG addresses the transportation needs of the Region's minority, low-income, & transit dependent*

- **Access to jobs** - Program continues to grow
- **Transit** - Continue to support many transit initiatives, including ITS implementation and better bus service
- **Clean fuel**
  - All older CT Transit buses retrofitted with particulate filters, second largest Fuel Cell Bus fleet in the country
  - Clean diesel requirements for Highway construction equipment
- **Ped & bike safety in urban areas**
  - Consideration given to ped and bike features in all projects
  - Advanced safe routes to school program

*Process*  
*Comments*  
*Questions*